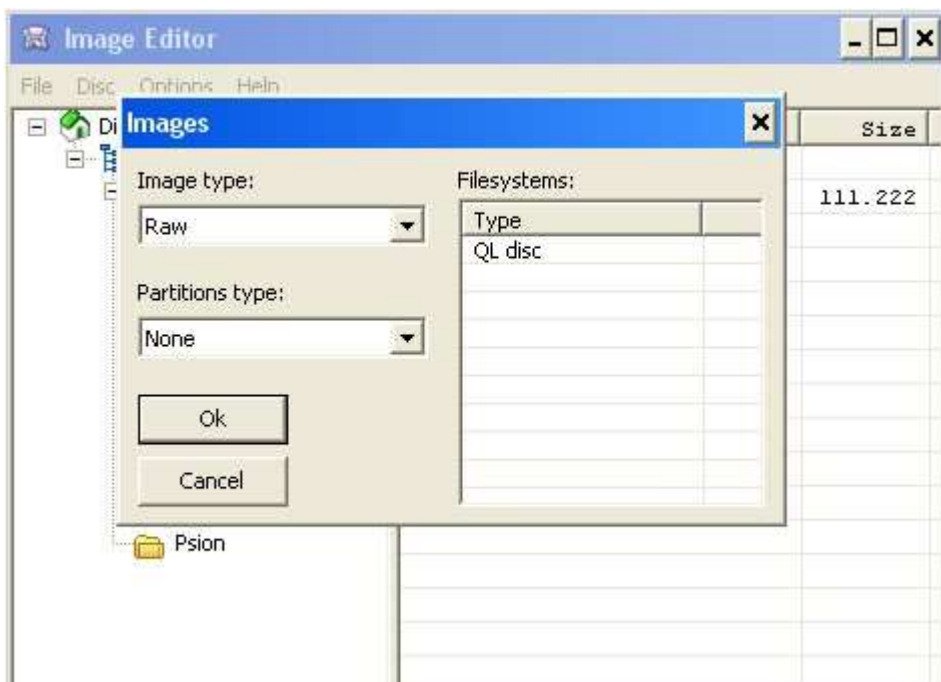
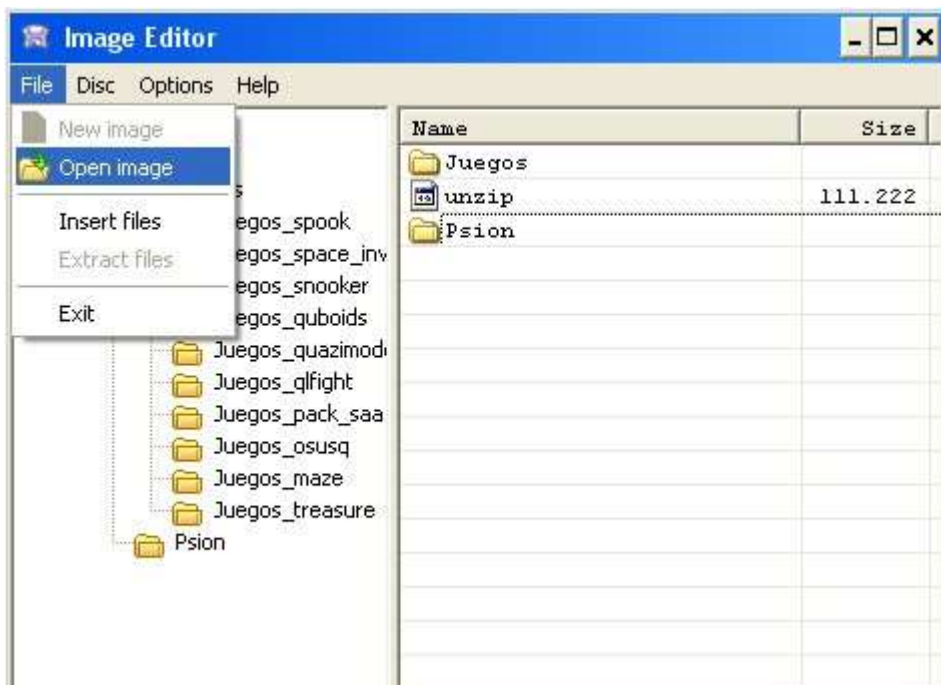


# Handle img files for sinclair QL using "Image Editor" program.

## Notes:

- Equipment use in this article: Sinclair QL with JS + TK rom(64K), QubIDE with 512K ram expansion, SD-IDE adpater and 32MB sd memory.
- PC with windows XP

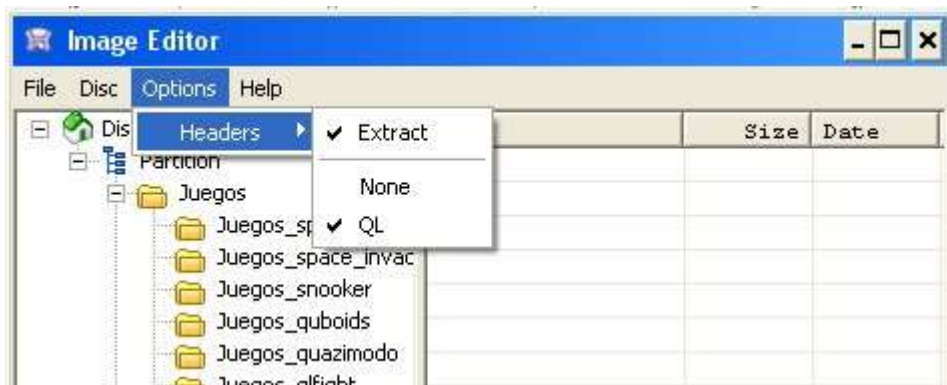
## Open and extract programs from sinclair img files.



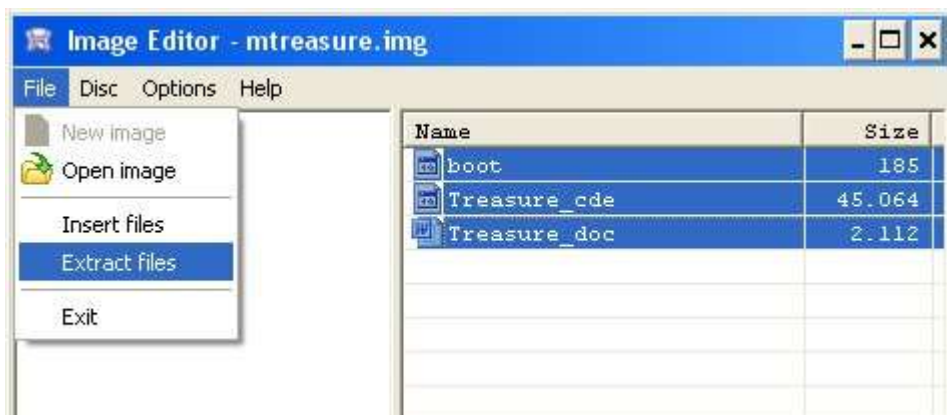
- 1 Start "Image Editor" program. Select "File" > "Open image" menu.
- 2 Select the sinclair QL **img** file you want to open.
- 3 The program will detect that image disk for Sinclair QL. Press "OK" and the program will show the programs inside.



- 4 Now is time to indicate "Image Editor" program that you want to export programs. Like QL header are needed, we'll select "Options" > "Headers" > "QL".



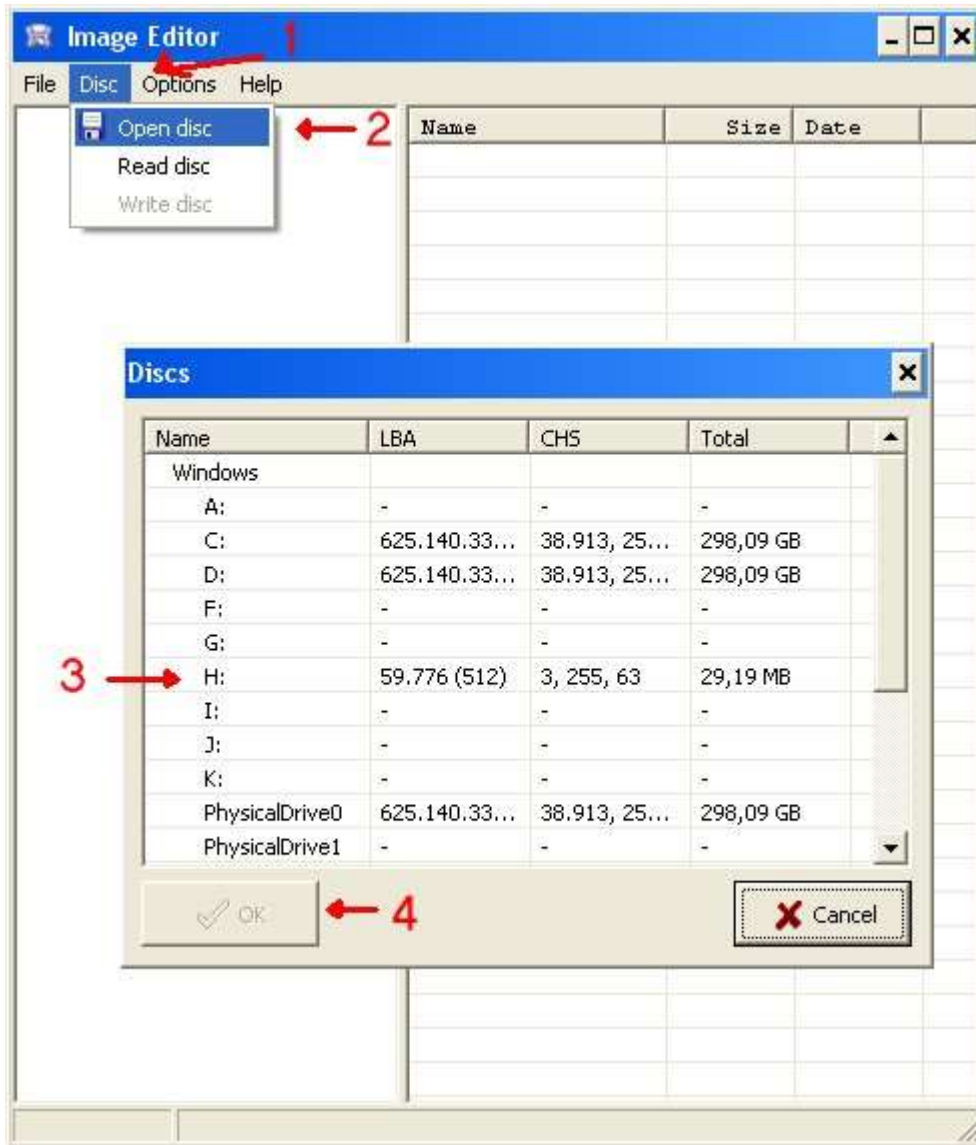
- 5 Use "Files" > "Extract files" menu.



- 6 Select the PC directory where you'll export the programs.



**Put programs into your sinclair QL IDE unit.**





- 5 Use the "File" > "Insert files" menu.



- 6 Select the programs that you want to import. "Image Editor" will automatic change files with "." extension by "\_" to avoid problem with standard Sinclair QL. The programs will be inserted in the directory you have selected.



2015 José Leandro Novellón