

wxqt2

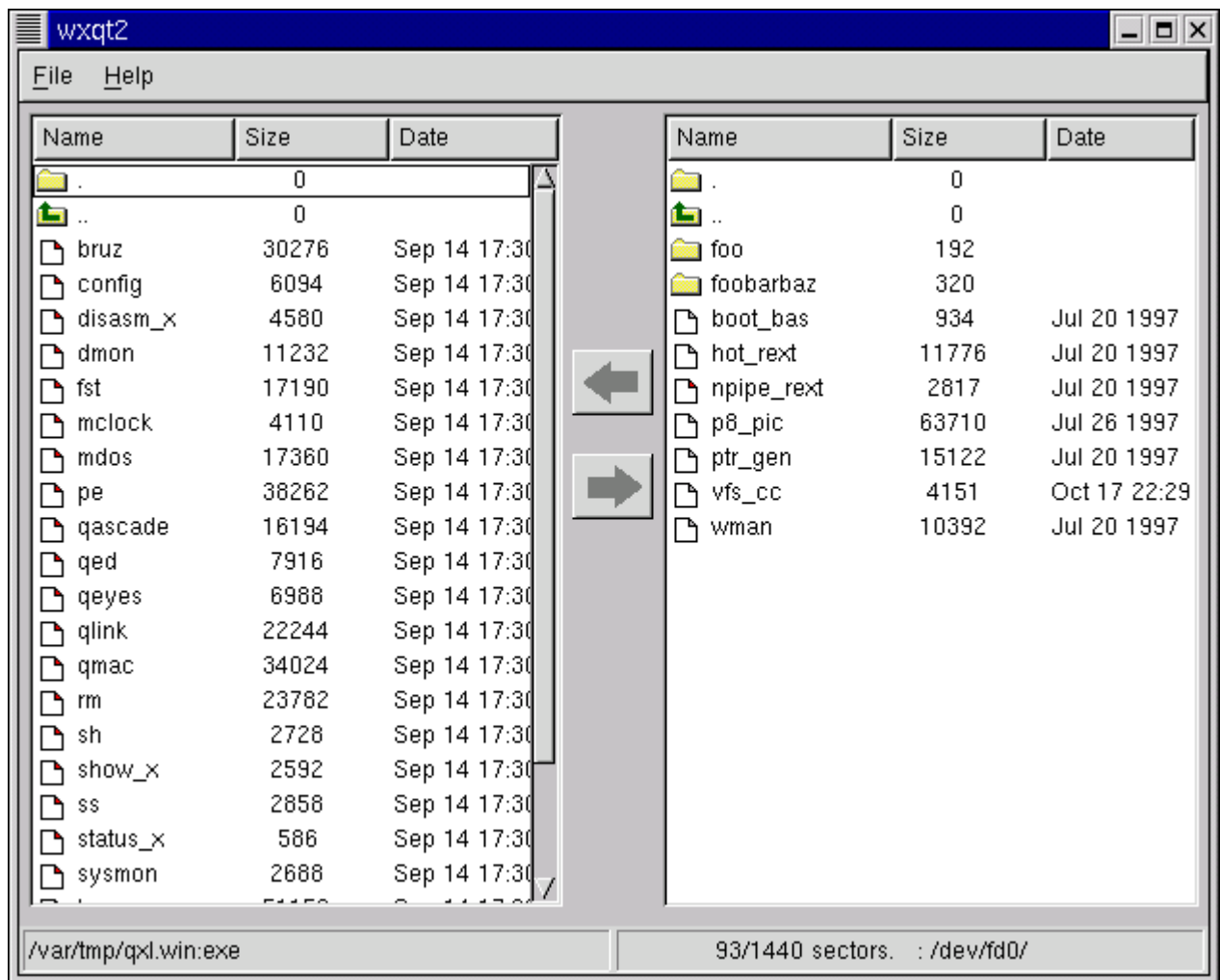
Contents

- [Introduction](#)
- [Usage Overview](#)
- [Menus](#)
 - [File/Options](#)
 - [File/New QXL File](#)
 - [File/Exit](#)
 - [Help/About](#)
 - [Help/Help](#)
- [Popup Menu](#)
 - [Popup/Delete](#)
 - [Popup/Format](#)
 - [Popup/Info](#)
 - [Popup/Mkdir](#)
 - [Popup/Version](#)
 - [Popup/View](#)
- [Copying using the Arrow icons](#)
- [Bugs and Incompatibilities](#)
- [Requirements](#)
 - [Unix \(general\)](#)
 - [Windows](#)
 - [qltools](#)
 - [qxltool](#)
- [Author](#)
- [Licence](#)
- [References](#)

Introduction

wxqt2 is a graphical front end for [qltools](#) and [qxltool](#). qltools is a Unix and Windows program to access QDOS formatted floppy from Unix, Windows and other operating systems, qxltool does a similar job for QDOS formatted hard disk container files (so called QXL.WIN files). wxqt2 is available for both **WIN32** (Windows 95/98/NT) and **X Window** (Unix) platforms thanks to the remarkable [wxWindows](#) C++ class libraries that make it possible to write graphical applications for both platforms using the same (well almost) APIs.

Using wxqt2, you can perform almost all file operations on QDOS format media using a graphical interface on Windows or Unix platforms.



The left hand pane shows a QDOS file system (in this case from a "qxl.win" hard disk container file), the container file is `/var/tmp/qxl.win`, in the QDOS directory `exe`. The right hand panel shows a QDOS floppy system, no-label, 758 free sectors on Unix device `/dev/fd0`.

Usage Overview


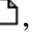
wxqt2 may be launched from the command line or from a file or program manager.

The devices loaded are configurable from the [File/Options](#) item.

Icons are used to indicate various files. Directories (folders) are denoted by a standard folder symbol, ; for example the `foobarbaz` directory in the above example. Some special folder are `'.'` (the current directory), `'..'` (go up, indicated by a folder with a up arrow in it).

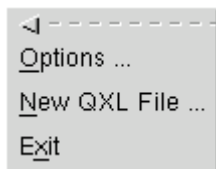
In a window, double (left button) clicking on any of these folder symbols will open that directory.

The rather pathetic QDOS directories are fully supported, even on floppy disks. You can click on them and recurse through the device just like a real file system.

Other icons represent files, the red corner indicates an executable file , while a grey corner is a normal file , as far as wxqt2 can distinguish.

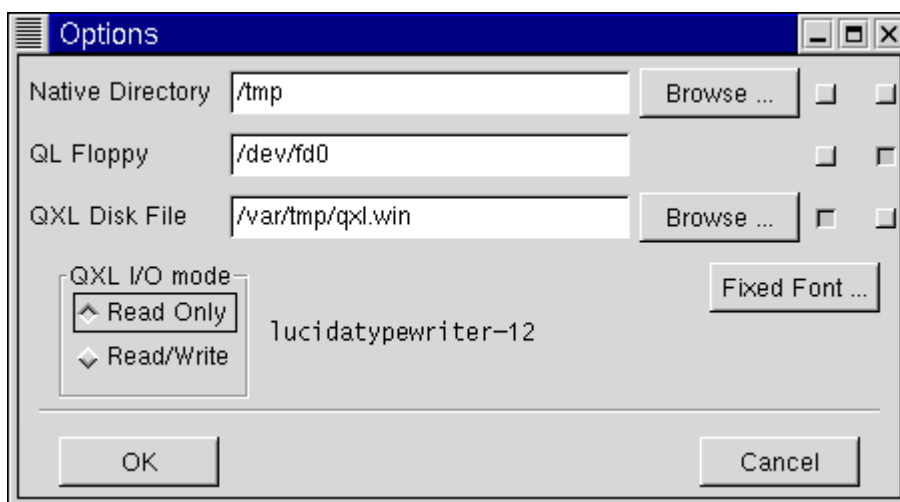
Menus

The **File** menu contains the following options.



File/Options

Selecting **Options** display the options dialogue.



The OK button causes the displayed values to be current. These are also saved on exit. The Cancel button causes the changes to be lost. The main window size is also saved between invocations.

The two columns of button at the extreme right hand side define while file system will displayed in the respective panel, in the example the QXL container file `/var/tmp/qxl.win` is shown in the left panel and the QDOS floppy disk in the right.

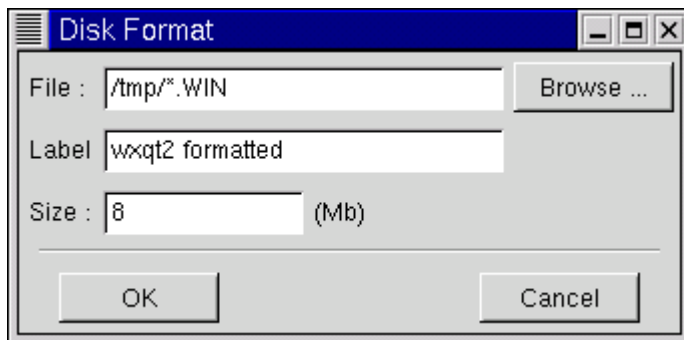
The *QXL I/O Mode* window defines whether you can write to a QXL.WIN container file. For some bizarre reason, the documentation for the structure of the QXL.WIN file is a closely guarded secret that is not available to the authors of free programs; you use the Read/Write setting at your own risk!

The *Fixed Font* button allows you to choose a preferably mono-spaced font for display of text files using the [Popup/View](#) menu option. In the example, the fixed width font

lucidiatypewriter at 12pt has been selected. An operating system specific font selector is used to choose this font.

File/Options

It is possible to format a new QXL file at any time (to format a displayed QXL file, you need to have set *QXL I/O Mode* to Read/Write). Selecting this menu option displays the following dialogue.



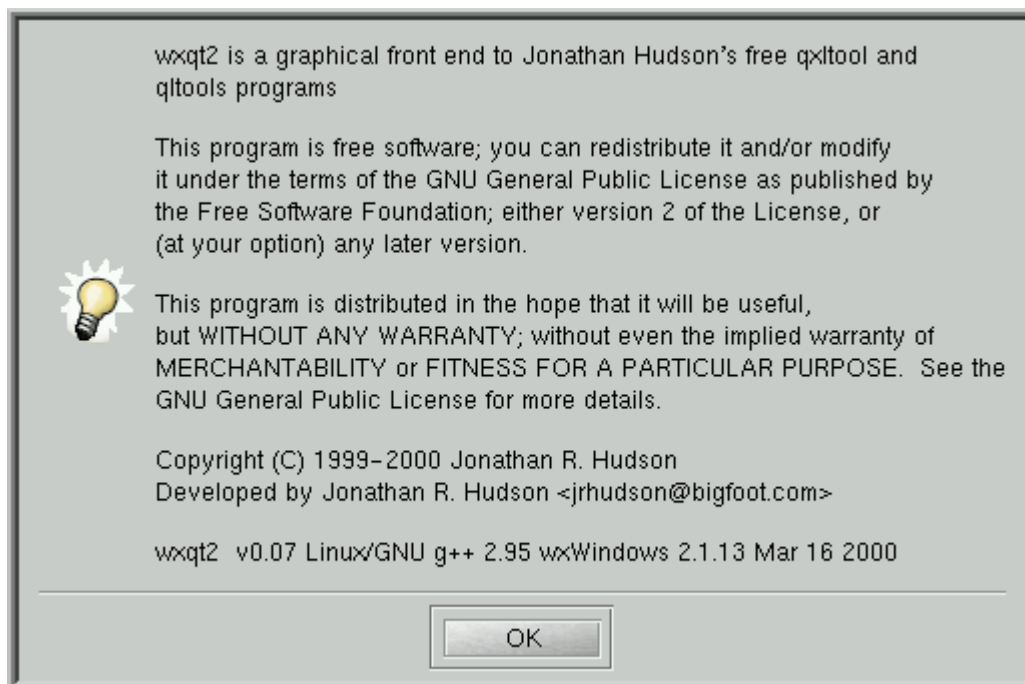
The browse button will use an operating system specific file browser to choose a file/directory for the new QXL.WIN file.

Files/Exit

This will exit the application. Your current settings are saved.

Help/About

The menu option will display some version information about wxqt2.



Help/Help

In order to use the help menu option, it is necessary to set the environment variable `WXQT2_HELP_DIR` to indicate the directory in which the help files are stored (i.e. the *entire* contents of the `doc/` directory from the distribution archive. The following examples assume you've installed contents of the 'doc' directory:

Unix

```
export WXQT2_HELP_DIR=/opt/doc/wxqt2/
```

or add a [Help] Dir = entry in `~/.wxqt2`, for example:

```
[Help]
Dir=/opt/doc/wxqt2
```

Windows/cygwin

```
export WXQT2_HELP_DIR=C:/wxqt2/doc
```

Windows/DOS

Try set `/?` then work it out yourself, if you can.

Alternatively, have a look at `qltapp.cc` and the contents of the Registry. and work it out yourself.

The key (modulo Win32 version) is

`HKEY_USERS\luser\Software\dld.org\wxqt2\Help\Dir`, where `luser` is the user name.

If you don't understand this, I'm not going to further help you break your Registry.

QDOS panel Popup Menu

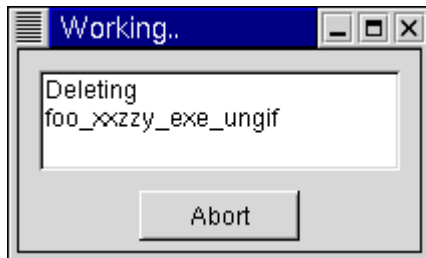
The QDOS panels (`flp_` and `qxl.win`) have a right mouse button pop-up menu. This menu offers the following options.



The options available depend on whether any files are selected, and in the case of `QXL.WIN` container files, whether the `qxl` file system is writable.

Popup/Delete

The Delete option will delete, without further prompting any highlighted QDOS files; it will recurse into any highlighted directories. If no files are selected or a QXL.WIN file system is read-only, then this option is greyed out. A progress box is displayed during deletion, where multiple files are being deleted, the operation may be aborted by clicking **Abort**.



Popup/Format

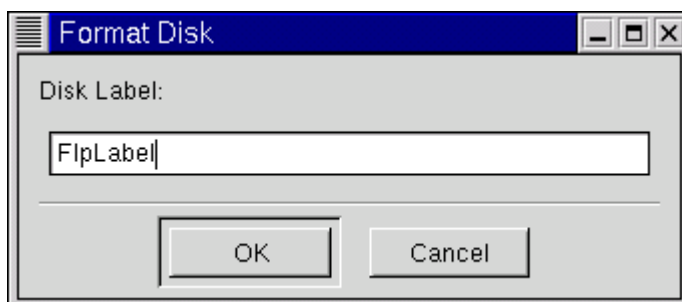
The Format option allows you to apply a QDOS format to the currently selected QDOS device or disk image. The format routine depends on whether you are formatting a floppy disk for a QXL.WIN container file.

Formatting floppies

wxqt2 will attempt to determine the format (DD or HD) as follows.

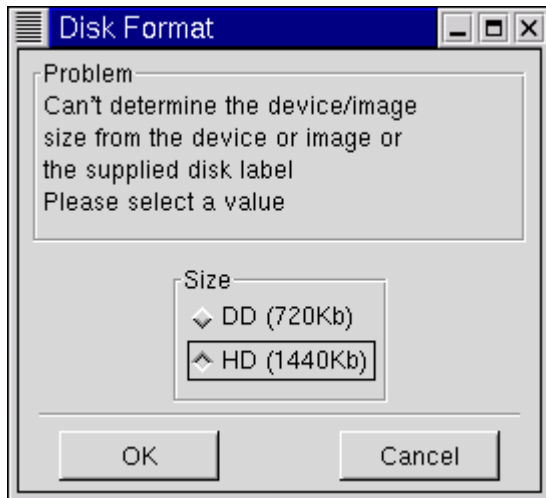
- If the supplied label has a * as the 11th character and either 'd' or 'h' (or 'D' or 'H') as the twelfth character then appropriate format will be assumed without further checking. If label does not contain extra formatting information then:
- wxqt2 for Linux and NT will examine the disk/image and attempt to decide. Other Unix will examine a disk image, and maybe a floppy device if you send me the code to do so.
- wxqt2 for Windows 9x can only examine a disk image, again unless someone provides an example of how to that works on both W95 and NT (i.e. DeviceIoControl() appears not to work on W95).
- If none of these conditions are met, a dialogue box is presented asking you to decide. You can force this to happen by giving a label with a '*' as the eleventh character and something other than d/D/h/H as the twelfth.

The label dialogue is presented as:



Press **OK** to continue with the format, or **Cancel** to abandon. The label will be truncated to 10 characters.

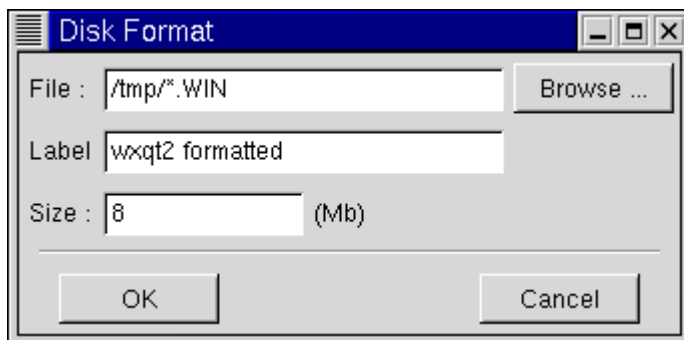
If wxqt2 is unable to determine the correct format for the disk, then the following dialogue is presented.



Press **OK** to continue with the format, or **Cancel** to abandon.

Formatting QXL.WIN

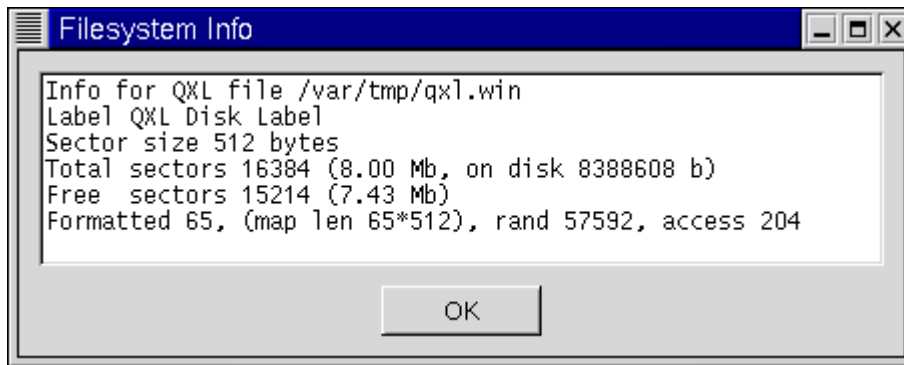
Parameters for the QXL file are entered in the following dialogue.



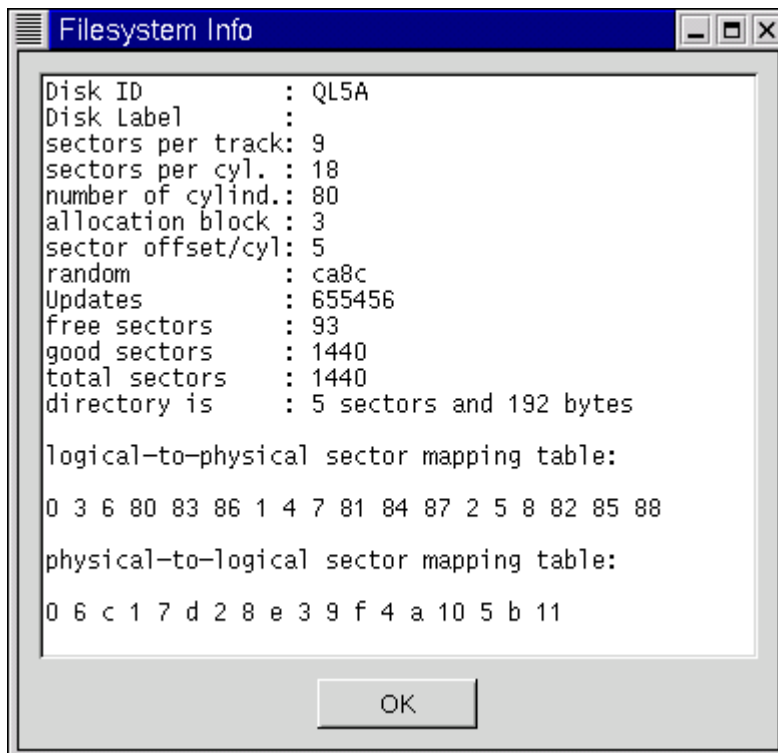
Popup/Info

The Info item will provide information on the QDOS device / image. A scrolling window is presented, with different views for QXL.WIN and floppy file systems.

QXL Information



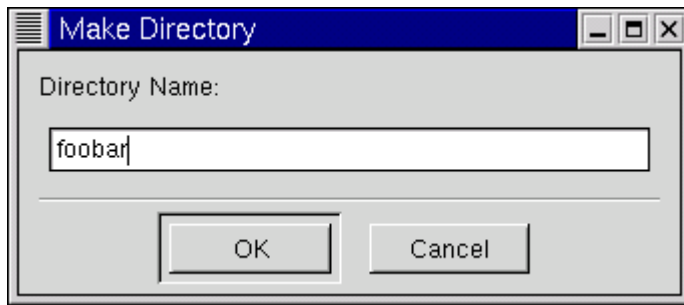
Floppy Information



Note that the window is non-modal, and any resemblance to the View window is entirely non-coincidental (see polymorphism).

Popup/Mkdir

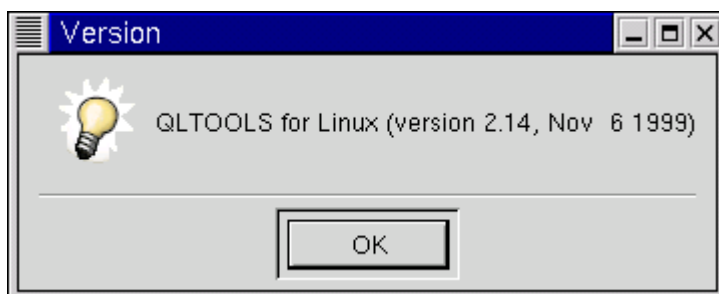
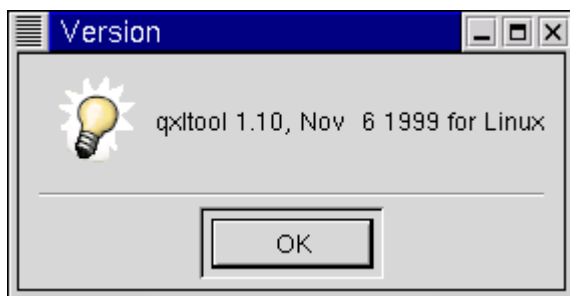
The Mkdir option will create a level 2 directory on the QDOS media according to the usual QDOS rules. A dialogue box is presented asking for the directory name.



Press **OK** to continue with the directory creation, or **Cancel** to abandon.

Popup/Version

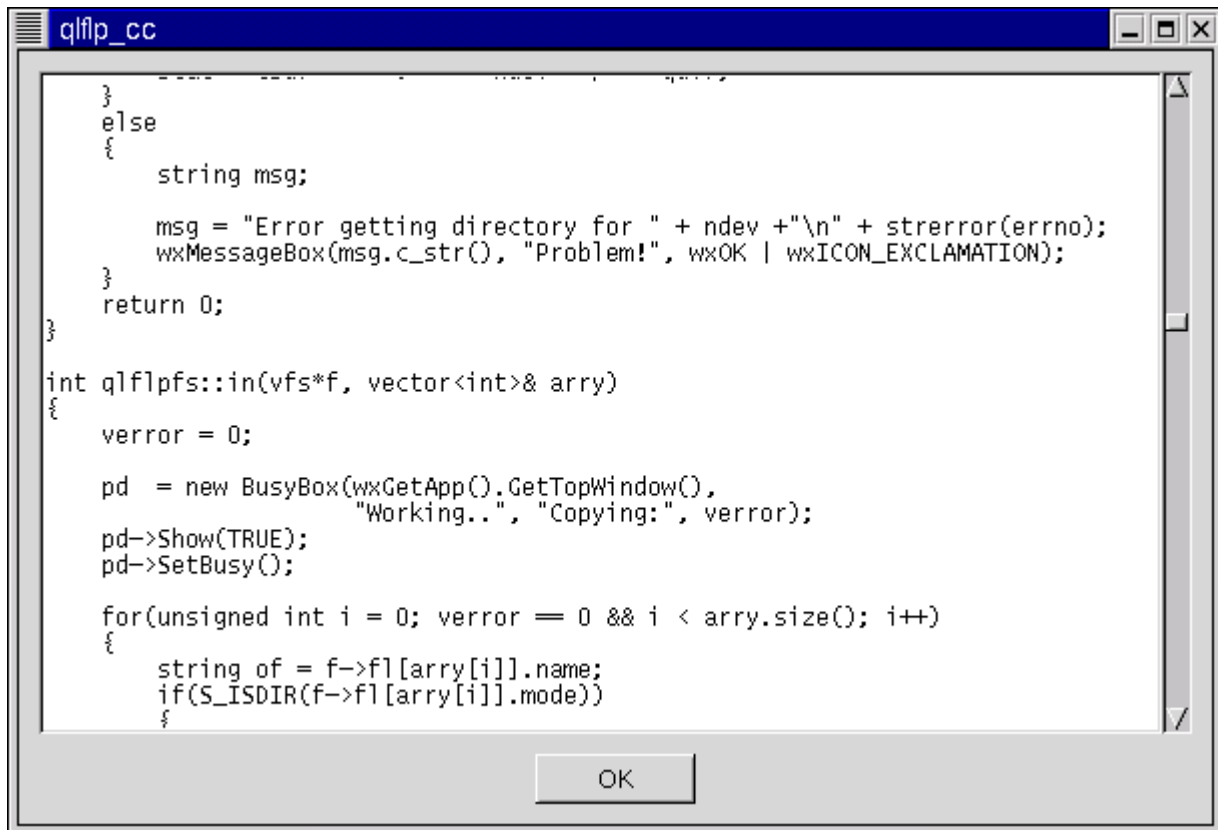
A version dialogue is displayed.



Popup/View

The View item will invoke a scrolling window to view a text (i.e. non-directory, non-executable) QDOS file. If no suitable files are currently selected, then this option is greyed out.

The scrolling window is presented as:



Note that the window is non-modal, and multiple views may be invoked.

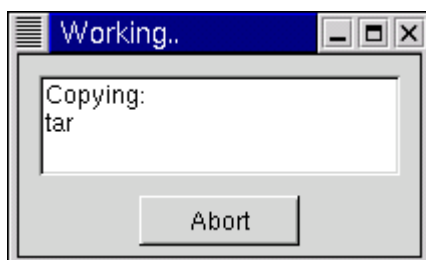
Copying, using the Arrow Symbols



Files may be copied between panes using the central arrow buttons. Files to be copied are selected by clicking with the mouse. Modifiers of *Control* and *Shift* allow selection of discontinuous files and ranges in sadly incompatible operating system specific ways.

When a directory is selected for copying all files in the directory will be copied.

When copying, which may be slow, particularly for Windows and floppy disks, a progress box is displayed.



Clicking **Abort** will terminate the copy.

Bugs and Incompatibilities, Todo

wxWindows v2.1 is still in beta, however it is sufficiently robust to be usable for a project like wxqt2.

Requirements

Unix

- X
- GTK (Gimp ToolKit) or Motif (Lesstif)
- wxWindows 2.1 (wxGTK requires GTK, recommended 1.27 or later, but any 1.2x may work)
- g++ (2.95 or later recommended)

Windows

- Windows 9x or NT

To build from source

- wxMSW 2.1 (beta 9 or later)
- C++ compiler ([gcc/g++](#), 2.90 or later (preferably 2.95), maybe VC++ with some hacking. Borland C++ is also supported.
- Cygwin GNU tools if using g++
- RCS for Win32

QDOS disk access software

- qltools v2.14 or later
- qxltool v1.13 or later

Author

Jonathan Hudson <jrhudson@bigfoot.com>

Licence

wxqt2 is Copyright (c) Jonathan Hudson and is distributed under the GNU General Public Licence, a copy of which is included in the wxqt2 archive.

References

The following links may be useful if you want to investigate some of the tools used to create wxqt2.

- [Jonathan Hudson's home page](#)
- [Linux](#)
- [GCC/G++ for Unix](#)

- [GCC/G++ for Win32 \(mingw32\)](#)
- [wxWindows Home page](#)
- [wxGTK Home page](#)
- [GTK Home Page](#)